

# FAMILY GUIDE 2026



**BEST SUMMER, EVERY SUMMER!**

**Camp Address: 865 Bartonsville Woods Road  
Stroudsburg, PA 18360  
(570) 629-0266**

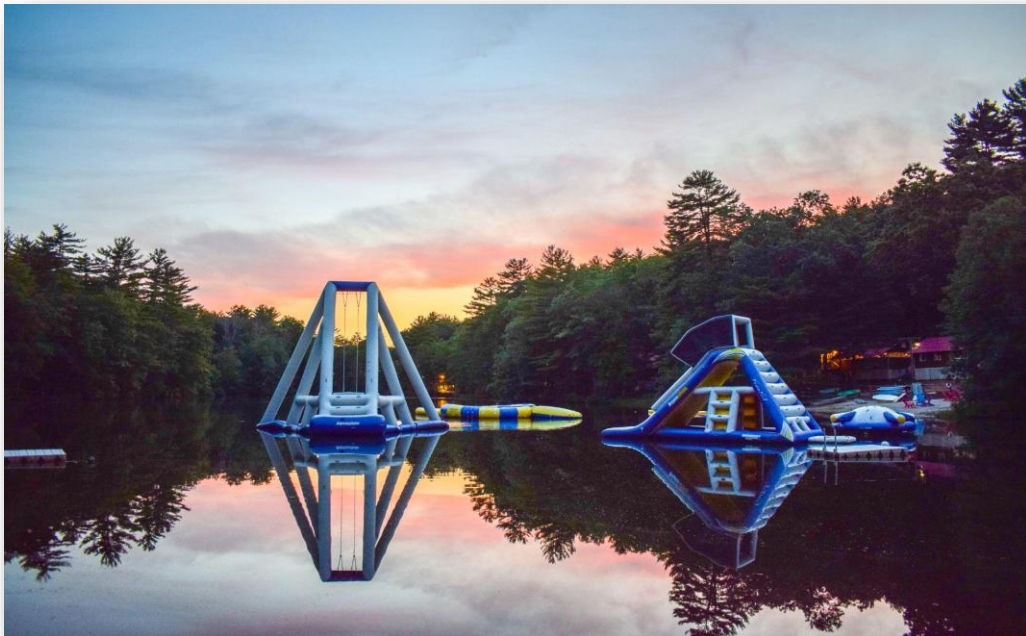


**GREATER POCONO  
CAMP ASSOCIATION**



# Table of Contents

<b>Cover Page</b>	1		
<b>Table of Contents</b>	2		
<b>Meet the Full-Time Team</b>	3		
<b>2026 Important Dates</b>	4		
<b>Contact Information</b>	5		
Summer Office	5		
Phone & Office Hours	5		
Emergency Calls	5		
<b>Communicating with your Child</b>	6		
<b>No Package Policy</b>	7		
<b>Arrivals</b>	8		
<b>Departures</b>	9		
<b>Medical Information</b>	10-12		
<b>Vaccination Policy</b>	12		
<b>NO Gummy Policy</b>	13		
<b>CampMeds Letter &amp; Registration</b>	14-15		
<b>Staff and Supervision</b>	16		
<b>Technology at Camp</b>	17-18		
<b>Additional Information</b>	19		
Activities/Electives	19		
Bar/Bat Mitzvah Tutoring	19		
Birthdays	19		
Bunk Placements	19		
Cancellations	20		
Discretionary Account	20		
Dress Code	20		
Evaluations	20		
Food	20		
		Incident Response & Security	21
		Laundry	21
		Lost & Found	21
		Money & Valuables	21
		Mosquitoes & Insects	21
		Musical Instruments	21
		Pets	21
		Pictures	21
		Reunion	22
		Sports Equipment	22
		Swim Instruction	22
		Telephone Calls	22
		Tours of Camp	22
		Trips	22
		Visitation Policy	22
		<b>Daily Camp Schedule</b>	23
		<b>Packing Guide</b>	24
		<b>SPARK Packing List</b>	25
		<b>Packing Pointers</b>	26-27
		<b>Advice for First Time Families</b>	28
		<b>Camper Care Tips</b>	29
		<b>Contract of Understanding</b>	30
		<b>IMPORTANT INFORMATION</b>	31-32
		<b>Social Networking &amp; Internet Policy</b>	33
		<b>Local Sites</b>	34
		<b>Pinemere Lingo</b>	35-36



# Meet the Full-Time Team

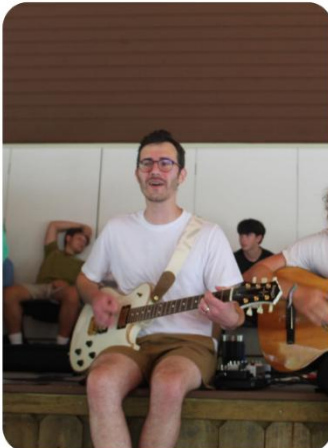


Aaron Singer - Interim Director  
[Aaron@Pinemere.com](mailto:Aaron@Pinemere.com)

Aaron started going to Pinemere when he was 11 years old and joined the Professional Team in 2017. He oversees the Staff Hiring, Program areas, and works with our rental groups. At camp, you can find Aaron managing our all-camp activities, helping out with scheduling and logistics, and definitely playing in our staff basketball games! He takes pride in ordering awesome SWAG for the summer & planning international travel when we visit our staff during the off-season.

Linz Etter Haft - Director of Camp Experience  
[Linz@Pinemere.com](mailto:Linz@Pinemere.com)

Linz was 7 years old when she began her Pinemere journey and joined the Professional Team in 2017. She manages the Unit Leaders, Camper Care Team, Health Center and summer office and is the main point of contact for parents. At camp, Linz loves checking in on the campers, giving tours to interested families and making sure everyone is healthy & having fun! During the off-season, she is busy recruiting new campers, creating monthly newsletters & social media, the FroYo Tour, and her love for zoom calls with camp families!



Jeremy Ferman - Director of Finance & Operations  
[Jeremy@Pinemere.com](mailto:Jeremy@Pinemere.com)

Jeremy (or nicknamed DOFO) started Pinemere at 10 years old and joined the Professional Team in 2020. Jeremy handles all tuition payments, Financial Aid Scholarships, and Donations. At camp, Jeremy enjoys leading Saturday Morning SING, making sure staff are getting paid, and running Magic card tournaments during Lazy Day. Jeremy manages Pinemere's annual budget and also oversees alumni reunions at camp.

# 2026 Important Dates

Session	Arrival Date	Arrival Time	Departure Date	Departure Time
Full Season 7 Weeks	June 28 <sup>th</sup> Sunday	9AM, 10AM, 11AM	August 16 <sup>th</sup> Sunday	9:30 – 11:00 AM
First Session 4 Weeks	June 28 <sup>th</sup> Sunday	9AM, 10AM, 11AM	July 26 <sup>th</sup> Sunday	9:30 – 11:00 AM
Second Session 3 Weeks	July 27 <sup>th</sup> Monday	2-3PM	August 16 <sup>th</sup> Sunday	9:30 – 11:00 AM
CIT 7+ Weeks	June 26 <sup>th</sup> Friday	3PM	August 16 <sup>th</sup> Sunday	9:30- 11:00 AM
Rising 10th Grade Trip 4 Weeks	July 1 <sup>st</sup> Wednesday	Meet at the PHL Airport!	July 29 <sup>th</sup> Wednesday	Picked up from the PHL Airport!
Pioneers A 14 Days	June 28 <sup>th</sup> Sunday	9AM, 10AM, 11AM	July 12 <sup>th</sup> Sunday	11AM
Pioneers B 14 Days	July 12 <sup>th</sup> Sunday	3PM	July 26 <sup>th</sup> Sunday	9:30- 11:00 AM
Pioneers C 13 Days	July 27 <sup>th</sup> Monday	2-3PM	August 9 <sup>th</sup> Sunday	11AM

## Fees

- Deposit of \$1,800 due with application + Security Fee (\$360- 2/3/4 weeks) (\$540- 7 weeks)
- Fall payment of \$1,500 due October 1, 2025.
- Winter payment of \$1,500 due January 1, 2026.
- Spring payment of \$1,500 due March 1, 2026.
- Final balance payment is due May 1, 2026.
- Payments may be made by check, cash, or credit card (Visa, MasterCard, or Discover). Please contact Jeremy Ferman (P: 215-487-2267/ext. 2 or jeremy@pinemere.com) with any questions about payment.
- **Refund Policy:** January 1st in order to receive a FULL refund. After January 1st, deposit is nonrefundable. After May 1st, nothing will be refunded.

## SPARK

- Spark is a special 3-Night overnight camp experience for Rising 1st-3rd graders.
- **Drop-Off: Thursday July 30th @ 3PM Pick-Up: Sunday August 2nd @ 11AM**

## Visiting Day

- **Date: Sunday, July 26<sup>th</sup>**
- Visiting Day will be in-person and you'll be able to take your camper out of camp from 10am-3pm.
- You will receive more details as it gets closer.

# Contact Information

## **SUMMER**

*June - August*  
(570) 629-0266

### Camp Address:

865 Bartonsville Woods Road  
Stroudsburg, PA 18360

## **WINTER**

*September - May*  
(215) 487-2267

### Mailbox Address:

333 E Lancaster Avenue, Suite 332  
Wynnewood, PA 19096

### **Summer Office**

Pinemere's office is led by a number of amazing adult staff and is the hub of our operation. Our staff members appreciate the importance of providing your family with great service and responding to your questions and concerns. The office team knows the camp extremely well and will do everything they can to help you with your needs no matter how big or small.

The phones in the office will be staffed from 8 AM – 8 PM. We do our best to check messages outside of these hours. You can also email Linz, Aaron or Jeremy directly. Wiktoria Dabrowska is our summer Communications Manager and can be emailed at [Office@pinemere.com](mailto:Office@pinemere.com). She handles all the logistics for office administration.

### **Telephone Policies & Weekly Office Hours**

We kindly request that calls be made to camp between 8:00 AM and 8:00 PM, while our office staff is on duty. In the event that the person you are trying to reach is unavailable, a message will be passed along to them. Our goal is to return each call within a few hours of when it was received. After 8:00 PM and/or if our office team is occupied, please leave a message and calls will be returned as soon as possible.

### **What if my call is an emergency?**

Emergency calls that occur in the middle of the night, and require that a camper be woken up, should go to the Interim Executive Director, Aaron Singer, on his cell phone: 770-789-6126, or Director of Camp Experience, Linz Haft, on her cell phone: 215-487-2267/ext 4. If the message can wait until morning, please send an email or leave a message at the office.



# Communicating with your Child

All correspondence should be sent as follows:

*For Campers & Staff:*  
[Camper's Name]  
Pinemere Camp  
865 Bartonsville Woods Road  
Stroudsburg, PA 18360

## Mail

Our campers write home at least 2-3 times per week because we feel that it is important for families to hear from their camper(s), even if the letters are relatively brief. Similarly, we encourage families to write or email their camper(s) regularly. Campers truly enjoy getting letters from home! In fact, many families send a letter that arrives at camp even before their child arrives for the session. In addition to the 2-3 letters to home, campers are encouraged to write as many additional letters as they want – to grandparents, siblings, friends, etc.

**Many families find it helpful to send pre-addressed (and stamped) envelopes or postcards with their child. This is the best way to ensure you receive all of your campers' mail!** Stamps, stationery, and envelopes are all available for sale from the canteen should your child run out of them.

Here's the suggested number of stamps & stationery your child should be bringing to camp:

First session: 20

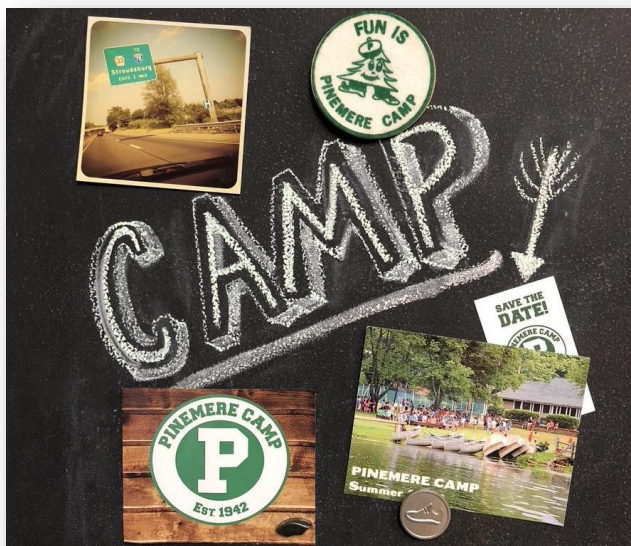
Second Session: 15

Pioneers: 10

Full Season: 35

## Email Information

Families may send email through the camp's web service, "CampStamps", which can be found in CampMinder. You can access the site to send emails at [www.pinemere.com/login](http://www.pinemere.com/login). This is available with the same secure username and password that you used to complete forms before the summer. Email messages to campers will be delivered at the same time as regular mail. Email messages to campers are only available through this service, not through our standard email address. Emails sent via CampStamps will be printed every morning.



## **\*\*\*NEW for 2026:**

Campers are now able to send return emails through **CampStamps**. If you select this option, your camper will be given a blank paper to write back to you & it will be scanned to your email.

You can buy CampStamps in the following packages:

10 (\$10)  
15 (\$14)  
20 (\$18)  
30 (\$25)

# Pinemere has a NO Package Policy

**ALL PACKAGES & LARGE ENVELOPES SENT TO CAMP WILL BE RETURNED BACK TO SENDER OR KEPT UNTIL THE END OF THE SESSION.** The ONLY 2 exceptions are Forgotten Items (which need prior approval from Linz) or Birthday Packages (which can not contain ANY food). Thank you for your understanding.



# Arrivals

Families are responsible for the drop-off and pick-up of their campers on the first and last day of the camp session. There is an optional round-trip Rockville, MD shuttle offered at an additional fee. We are very happy to assist in airport pick-up accommodation whenever possible.

## CIT Drop Off: Friday June 26, 2026

- **Drop off time will be 3:00 PM.**
- Our Staff Team will help unload your camper's luggage from the car & deliver it to their bunk.
- After a huge hug "Goodbye" with your camper, the counselors will take care of helping your camper unpack and get them settled into their new summer home!
- *Every camper will be given a lice check after they've arrived.*

## First Session, Pioneers A & Full Season Camper Drop Off: Sunday June 28, 2026

- **Prior to camp, a link will be sent to you to Sign Up for your Family's Drop Off time!**
- There will be 3 different Time Slots Offered: 9-9:45AM, 10-10:45AM, 11-11:45AM.
- We'll be limiting the number of families for each time slot, to minimize wait time upon arrival at camp.
- Our Staff Team will help unload your camper's luggage from the car & deliver it to their bunk.
- After a huge hug "Goodbye" with your camper, the counselors will take care of helping your camper unpack and get them settled into their new summer home!
- *Every camper will be given a lice check when they arrive.*

## Rising 10th Graders Drop Off: Wednesday July 1, 2026

- The flight to Lisbon departs from Philadelphia International Airport at 9:20PM. You will be responsible for getting your camper to the PHL airport. We will email you the drop-off time & meeting place.

## SPARK Drop Off: Thursday July 30, 2026

- **Drop off time will be at 3PM.**

## Pioneers B Drop Off: Sunday July 12, 2026

- **Drop off time will be 3 PM.**
- Our Staff Team will help unload your camper's luggage from the car & deliver it to their bunk.
- After a huge hug "Goodbye" with your camper, the counselors will take care of helping your camper unpack and get them settled into their new summer home!
- *Every camper will be given a lice check when they arrive.*

## Second Session and Pioneers C Drop Off: Monday July 27, 2026

- **Drop off time will be 2-3 PM.**
- Our Staff Team will help unload your camper's luggage from the car & deliver it to their bunk.
- After a huge hug "Goodbye" with your camper, the counselors will take care of helping your camper unpack and get them settled into their new summer home!
- *Every camper will be given a lice check when they arrive.*

# Departures

## Pioneers A Camper Pick Up: Sunday July 12, 2026

- Parent Arrival will be at **11 AM**. Please do not arrive before that time, as we will still be getting our Pioneer A campers ready to go.
- Our Pinemere Staff will load your camper(s)' bags into your car.
- There will also be a table to pick up any leftover medication from our Health Center.
- You will have the option to register for *Summer 2027* and receive the Pick-up Special tuition rate & special swag gift!

## First Session & Pioneers B Camper Pick Up: Sunday July 26, 2026

- Parent Arrival will be from **9:30AM-10:30 AM**. Please do not arrive before that time, as we will still be getting our campers ready to go.
- Our Pinemere Staff will load your camper(s)' bags into your car.
- Families will then park on the fields.
- There will also be a table to pick up any leftover medication from our Health Center.
- At approx. **10:00AM**, parents will meet their camper(s) on the Green!
- You will have the option to register for *Summer 2027* and receive the Pick-up Special tuition rate & special swag gift!
- We expect families to depart around **11:00 AM**.

## Rising 10th Graders Pick Up: Wednesday July 29, 2026

- Their flight from Lisbon arrives at PHL at 1:35PM. You will be responsible for picking up your camper from the Philadelphia International Airport. We will email you the pick-up time & meeting place.
- If they are returning to camp for the 10-day add on: **Drop-Off: Thursday July 30th @ 3PM**  
**Pick-Up: Sunday August 16th @ 9:30-10:30AM**

## SPARK Pick-Up: Sunday August 2, 2026

- Parent Arrival will be at **11 AM**. Please do not arrive before that time, as we will still be getting our Pioneer A campers ready to go.
- Our Pinemere Staff will load your camper(s)' bags into your car.
- You will have the option to register for *Summer 2027* and receive the Pick-up Special tuition rate & special swag gift!

## Pioneers C (August 9th) : Second Session, Full Season & CIT Camper Pick Up: Sunday August 16, 2026

- Parent Arrival will be from **9:30AM-10:30 AM**. Please do not arrive before that time, as we will still be getting our campers ready to go.
- Once you arrive, our Pinemere staff will load your camper(s)' bags into your car.
- Families will then park on the fields.
- At approx. **10:00AM**, Parents will meet their camper(s) on the Green!
- You will have the option to register for *Summer 2027* and receive the pick-up special tuition rate & special swag!
- There will also be a table to pick up any leftover medication from our Health Center.
- We expect families to depart around **11:00 AM**.

# Medical Information

Please read this section carefully!

## Health Care and Medical Staff

The health and well-being of the campers at Pinemere is extremely important and we take great care in organizing our Health Center. The Health Center will be staffed by qualified professionals who understand the needs of our campers and families. Our Health Center staff will provide round-the-clock supervision in our modern, air-conditioned facility.

## Medical Forms

**No camper will be permitted in camp without completed medical forms.** The medical forms can be completed by logging in to the CampMinder/CampInTouch section of our website, and you must submit the signed physician's authorization to the forms section of CampMinder/CampInTouch.

Medical Forms Required:

- Physician's Examination (Updated forms required every summer. Valid from 7/01/25-6/30/26)
- Immunization Form (this is on the same document as the Examination. You upload both documents as one form.)
- Health History
- CVS Registration/Authorization to treat

## Special Concerns

We are your partners! To do our best job and support your child, please use the Camper Information Form to advise us of any special health, learning, dietary, psychological, behavioral, or other conditions that affect your child. Knowing about a learning difference, ADHD, a history of bed-wetting, or a recent loss or trauma in the family makes a tremendous difference in helping us to be sensitive to your child's needs. At our Directors' discretion, this information will be shared in a confidential manner with appropriate staff members in an effort to best serve your child and create an exceptional summer experience.

We encourage you to consider us a full partner in planning for your child's summer. Please feel free to reach out to [Linz@pinemere.com](mailto:Linz@pinemere.com) to discuss any of these issues personally. We thank you for your cooperation and understanding.

## Medical Insurance

Pinemere Camp will cover your child's medical expenses as follows:

- \$3500 maximum per camper per accident
- \$1500 maximum per camper per illness requiring a trip out of camp

## Prescription Medications and CampMeds

All campers that take daily medications in pill form, including vitamins and OTC pills, must be enrolled (on time) with CampMeds. To get their lowest rate of \$65, sign up before March 1st. After that, rates increase to \$85 per camper registered in March and April and increase again to \$105 for any campers who sign up after the start of May.

**Please note: Any family who does not enroll with CampMeds will be charged up to \$300 for the Health Center to distribute medications not received directly from CampMeds.**

**\*\*\* If you get prior approval from Linz or Irene Michel, Health Center Director, to drop off medications instead of using CampMeds, there will still be a fee of \$75 for our team to package everything that is dropped off due to this taking extra time, resources and supplies to do so.**

*Continued on the next page...*

Exceptions to the \$75 drop off fee include prepackaged dissolve tabs, rescue inhalers, ointments, creams, eye drops, epi-pens, powdered medications such as miralax, nasal sprays and injectable medication and birth-control pills or accutane as these are already prepackaged and campmeds is unable to procure those two types of medications for us. Pinemere requires that all medications with the exception of emergency rescue medications be kept in the Health Center. Mealtime medications and bedtime medications will be distributed by our medical staff for your child's convenience. Lactaid pills are always available at meals free of any additional charges.

### **Health Check**

All campers at Pinemere will be checked for head lice and body temperature upon arrival at camp, before any camper goes to his/her bunk (see below for more information). If a camper has a temperature of 100.4 or higher, they may not be admitted into camp until they're fever free for 24 hours without fever reducing medication.

### **Head Lice**

As we have in summers past, this summer we are partnering with the Center for Lice Control to prevent and treat lice in a safe and effective manner. Please see the "Forms & Documents" section of your online account for more information. Families should check their campers before they get to camp.

### **Contact with Families**

The Health Center staff will be in contact with families on the following occasions:

- If your child needs to be sent out to a local doctor or hospital
- If your child has a fever that is 100.4 or above
- If your child will be spending the night in the Health Center
- If your child needs a prescription medication or a change of medication
- If your child is seen by our camp doctor and he/she believes a phone call home is appropriate
- If your child needs a splint or wrapping
- If a concussion is suspected
- If our medical team feels an exam to a private area is necessary to provide care
- To follow up about a previous discussion

If you are concerned about any aspects of your child's health, please feel free to call the camp office.

### **Doctor and Hospital Visits**

If the Health Center staff feels that your child must be seen by a doctor or at the hospital, your child will be transported to St. Luke's Hospital or urgent care center. If your child is taken to the hospital, or needs outside medical attention, you will be contacted as soon as possible.

### **Dental and Orthodontic Appointments**

A pre-summer visit to the dentist and/or orthodontist is advised to avoid potential problems during the summer. In the event that your child unexpectedly needs dental/orthodontic work, you will be contacted. You may choose to pick up your children from camp and take him/her to your own practitioner, or for us to make an appointment for your child with a local practitioner. Pinemere will do our best to secure an appointment with a local provider. This is not always possible. The local orthodontist is only able to replace broken wires.

### **Eyeglasses & Contact Lenses**

If your child wears glasses or contact lenses, we encourage you to send extra pairs and/or prescriptions to camp. These would be best kept in our camp office or health center. If he/she needs urgent eye-care during the summer, we will contact you before making a decision on treatment.

*Continued on the next page...*

### **Injectables**

If your child requires injections while at camp, please leave an ample supply of medication and syringes with the nurses in the Health Center. Our medical staff will be available to administer shots as needed.

### **Medic-Alert Bracelet**

Children who react to specific antibiotics or medications, or who have specific medical ailments should wear a Medic-Alert bracelet, which can be attained through the Medic-Alert foundation in your city. If your child falls into this category and does not already have one, please arrange for one prior to camp.

## **Vaccination Policy**

Pinemere Camp is an engaging and social program in a residential setting. The health, safety and wellbeing of our entire camp community is extremely important and is a priority of Pinemere Camp. In consideration of recommendations from the Pennsylvania Department of Health, the American Academy of Pediatrics (AAP) and Center for Disease Control (CDC) for communal living setting, Pinemere Camp requires the age-appropriate vaccination of all campers, staff and employees.

### **The following immunizations are required by 28 PA.CODE CH 23.81:**

- 4 doses of tetanus (1 dose on or after the 4th birthday), usually given as DTP, DTaP, DT, or Td.
- 4 doses of diphtheria (1 dose on or after the 4th birthday), usually given as DTP, DTaP, DT, or Td.
- 3 doses of polio vaccine – oral (OPV) given before April 1, 2016 or injectable (IPV).
- 2 doses of measles and mumps and 1 of rubella (MMR) vaccine given after the 1st birthday.
- 3 doses of hepatitis B vaccine – the first 2 doses given at least 1 month apart, and the third dose 16 weeks after the first dose and after 24 weeks of age.
- 2 doses of varicella vaccine (chicken pox), given after the 1st birthday, or history of disease documented in writing by a physician.

### **\*For students entering Grade 7 or older:**

- 1 dose of tetanus, diphtheria, acellular pertussis (Tdap) (if 5 years has elapsed since last tetanus immunization).
- 1 dose of meningococcal conjugate vaccine (MCV).
- A MCV4 booster for 16+ year olds.

### **Addition vaccination considerations:**

- Hepatitis A vaccination is recommended for all campers. Please consult with your doctor about the recommended AAP/CDC schedule for the Hepatitis A vaccine.
- We recommend that all campers and staff receive the yearly influenza vaccine.
- We recommend MenB vaccination for all campers 16+ traveling as part of a camp program.
- Vaccine recommendations for international travel may need to change based on destinations.

### **Policy Exemptions:**

- Pinemere Camp understands that some individuals are medically unable to receive certain vaccinations. We require documentation from a physician to exempt the individual prior to the summer program. Any other exemptions are at the discretion of the Director.

\*It is important for families to note – Individuals with exemptions may be excluded from the camp program, at the direction of the Pennsylvania Department of Health, should an outbreak of a non-immunized disease occur.

# No Gummy Policy

## Gummy Medication Policy

Pinemere Camp will not be administering gummy medications, vitamins or supplements, including melatonin. We are committed to utilizing the contracted company, CampMeds, to package all pills, vitamins, and supplements to safely meet the needs of the campers while attending camp. CampMeds will not package gummies and will not ship bottles of gummies to camp with your order. Orders for these items will not be filled, so please begin speaking with your child(ren)'s physician about alternatives if they will need to be taking vitamins or supplements at camp. Additionally, please do not send gummies from home to camp in hopes that we will administer them, as we will not provide them to your camper. There are many chewable, dissolvable or swallowable alternatives available for you to trial with your child. We strongly recommend that you begin trying out non-gummy options for your camper(s) who **MUST** have vitamins and supplements at camp now.

**Why is this policy needed:** After consultation with the medical team and pharmacists and review of similar policies at other camps we ultimately decided that we could not continue administering gummy medications at camp when safer, more effective alternatives existed. Gummies medications cannot be effectively packaged by CampMeds. While the medication room is temperature controlled, the humidity at camp makes gummy medications stick together making safe dosing a problem. Gummy medications also do not conform to any standard pill marking or labeling which makes it impossible to identify medications once they are out of the bottle.

As a reminder, Pinemere Camp does not permit any medication, supplements, or vitamins to be kept in the bunks. Found items will be removed from bunks and will be held for return when the camper goes home.



Dear Pinemere Camp Families,

Welcome to CampMeds! We ship your child’s medication, prepackaged by date and time taken, directly to Pinemere’s health center. This cuts down on any potential confusion or errors in dispensing and allows for efficient and safe medication passes at camp. We’re excited to partner with Pinemere to ensure your camper has the medications they need for this coming summer.

**Getting Started** - Register your camper at [www.campmeds.com](http://www.campmeds.com) – every camper must sign up each summer. Registration for Summer 2026 opens on **January 2, 2026**, and you can lock in our lowest rates by completing the process before March 1<sup>st</sup>, 2026. Registration must be completed at least 15 days prior to your camper’s start date.

Dates	Registration Rate
January through February	\$65 per camper
March through May 15 <sup>th</sup>	\$85 per camper
May 16 <sup>th</sup> through August	\$105 per camper

When registering, you will enter the medications you would like CampMeds to supply for your camper this summer. This can include prescription, over the counter medications and supplements.

**Please note, CampMeds cannot supply the following medications for Pinemere:**

- EpiPens
- Inhalers
- Gummies
- Liquids or drops
- Powders
- Avi-Qs
- Insulin
- Growth hormone injections
- Injectable medications
- Birth control
- Accutane
- Seysara
- Temperature-controlled medications
- Hiya or other subscription-based supplements

*If your camper takes any of these medications, please reach out directly to your camp for their policies for bringing these medications from home; **do not include them in your CampMeds medication order.***

**Submitting Prescriptions & Updating Medications** - Once you’ve registered, please contact your camper’s prescriber(s) for any required prescriptions. Prescriptions must be submitted at least 30 days before camp begins to avoid a late fee and no later than 15 days before your session starts. If your camper’s medication changes between registration and camp, please notify us as soon as possible to ensure we have the most up-to-date information.

Medications won’t be processed through insurance until the first day of camp.

**Contact Us** - If you have any questions, feel free to reach out to us at [info@campmeds.com](mailto:info@campmeds.com) or call **954-577-0025**. Our team is happy to assist! You can also visit our comprehensive FAQ section for additional information.

Thank you for trusting CampMeds with your camper’s medication needs. We look forward to working with you to ensure a safe and smooth summer!

Best,

The CampMeds Team

# REGISTERING YOUR CAMPER WITH



CampMeds

1

## CREATE A LOGIN

Go to CampMeds.com & select Register. From there, enter account information, including a username & password. Check your email for a confirmation email, follow the link to add security questions.

---

2

## ENTER YOUR INFORMATION

After logging in, add contact information, including address & phone number. Please make sure this is accurate, as CampMeds may need to contact you to clarify your camper's account.

---

3

## FIND YOUR CAMP & ADD CAMPER INFORMATION

Search for your camp with the first three letters of it's name - be careful, some camps have similar names! Once you find the correct camp, add your session dates, as well as your camper's biographical information - make sure this matches what is used for insurance or prescription purposes.

---

4

## ADD INSURANCE AND ALLERGIES

Next, add your camper's health & prescription insurance and any allergies that our pharmacy partner should be aware of.

---

5

## ADD CAMPER MEDICATION LIST

Enter the name, strength & form for your first medication. Select if it given daily or as needed, as well what time your camper takes it & dosing instructions. If you cannot save, something is missing - look for the red asterisk. Repeat for each medication.

---

6

## ENTER ADDITIONAL CAMPERS

Complete steps 3 through five for any additional campers.

---

7

## READ ACKNOWLEDGEMENTS & ENTER BILLING INFO

Read through & e-sign the CampMeds acknowledgements. From there, enter your billing information to complete the registration. You will receive an email with a receipt of your registration once this is completed.

---

### HELPFUL HINTS

- Passwords and logins are case sensitive
- Look for the red asterisk if you cannot continue on - you're likely missing something
- There should be no spaces before or after your username or password
- Please reach out with any changes - we can update session dates, medication lists, billing or insurance information, but the sooner you let us know, the better!

# Staff & Supervision

Our most important off-season task in preparing camp for your child is the hiring and training of our exceptional staff. We pride ourselves on the quality of the individuals that work with the campers, as well as the staff that support their work all summer. All staff members will be part of a pre-camp Orientation & Training program as well as in-service education during the camp season.

From our directors, to our supervisors, to our counselors, we will be working hard to enhance the feeling of community, qualities of leadership, consistency of supervision, and the sense of respect that all campers, teens, and staff enjoy at Pinemere.

## Tipping Policy

Pinemere does not allow staff to accept tips. Our counselors are professionals who are dedicated to serving every camper equally during the summer. They understand that they cannot accept any gratuities for their work. Families can show their support of staff by making a contribution in their name to Pinemere's scholarship fund. These donations are tax-deductible. If you make a donation in honor of a staff member, the staff member will be notified of such contributions.





# TECHNOLOGY @ PINEMERE CAMP

## PINEMERE IS A SCREEN-FREE CAMP!

Here are some great reasons that we have chosen to make Pinemere a Screen-Free environment:

- Encourage our campers to spend more time enjoying the outdoors
- Promote socialization between campers and teach important communication skills
- Remove the divide between the “haves” and the “have-nots” in each bunk
- Reduce the stress associated with the damage to and theft of electronics
- Give campers a much-needed break from the world of technology
- Allow campers to fully embrace the connections they make with other campers
- Assure that our campers are not exposed to age-inappropriate material

*We are happy to specifically clarify how this is defined at Pinemere!*

Allowed:

- Disposable & Polaroid Cameras
- Fyrfly Player (formally known as the Campfire Player)
- Mighty Vibe Spotify and Amazon Music Player
- Books, Playing Cards & Magic Cards
- Music-playing device that does not have a screen with video capabilities
- The only exception to this rule is the iPod Nano. Campers are permitted to bring an iPod Nano to camp but all photos and videos must be deleted from the device prior to arrival at camp.
- Camp reserves the right to check music players to ensure they meet our technology standards and may hold such devices in the office until the completion of the summer.

### SUGGESTIONS

Here are a few music players that are easily available on amazon.com or at your local electronics store:



### NOT ALLOWED

- Cell Phones
- Kindles
- Laptops or Desktops
- TVs
- Tablets
- PSP, Nintendo DS, other gaming devices
- iPads, iPod Touches, other iPods w/video
- Video Cameras
- Apple Watch

### NO CELL PHONES

Campers are **not** permitted to have a cell phone at camp under any circumstances. We would appreciate the cooperation of parents/guardians with this policy, including restricting their own use of cell phones in camp on arrival day, visiting day, and departure day. If your child is flying to/from camp and they travel with a phone, it will be kept in the office safe when they arrive at camp and returned at the end of the session. **Any cell phones found at camp will be mailed home to families.**



# MORE TECHNOLOGY @ CAMP



## DIGITAL CAMERA RULES

Taking snapshots of the fun times our campers enjoy while at Pinemere is something we love to do – thousands of images have been captured by our staff in recent years. In addition, we do allow campers to bring cameras with them and use them during certain special activities during the summer. We do, however, have a few rules concerning the use of cameras at camp during the summer:

- Campers are not permitted to use the video option to take video, except when specifically permitted. We recommend disposable cameras (and sell them through our canteen) to prevent the loss or damage of any expensive equipment.
- Cameras are not to be carried around during the day, but can be brought to specific programs with permission from a unit leader.
- Due to concerns regarding personal privacy and liability, Pinemere Camp reserves the right to limit the use of photographic equipment, and the areas/activities in which photographs may be taken, during the summer.



*We view the opportunity to disconnect as a gift for your children while at camp. Thank you for supporting this effort to simplify the camp experience and to build additional interpersonal skills.*

# Additional Information

## Activities

Campers will participate in the following daytime activities while they are at camp this summer: **Waterfront** (free swim in the pool, Bunk Lake Fun with inflatables, canoeing, kayaking, paddle boarding); **Creative Arts** (Arts & Crafts, ceramics, woodshop); **Performing Arts** (Drama, Music, Dance); **Sports** (Basketball, tennis, soccer, sand volleyball, floor hockey, gymnastics, archery, flag football, gaga, frisbee, baseball); **Outdoors** ( fire building, cooking, fishing); and **Adventure** (rock climbing, zip line, high course elements.)



## Bunk Activities

During the normal camp day, there are 3 bunk activities scheduled. Camp schedules these each week to ensure that campers get to experience all Pinemere has to offer and to ensure a day offers a variety of activities. At the start of the week campers will have the schedule posted for them so that they know what's coming. When bunks go to these activities with their counselors, they enjoy the instruction and leadership of the specialty staff. All campers are expected to participate, to the best of their ability, in all activities.

## Electives

Electives are activities that are chosen by campers on their own and make up two afternoon periods, with the 3rd period being a Free Swim. The electives are all activities that are run by specialty counselors and are divided into age/gender-appropriate groups as needed. Campers are given a list of all electives after a few days of camp, and they rank their top three choices. The programming staff then assigns top choice electives for each camper for the upcoming week. Electives change weekly.

## Bar/Bat Mitzvah Tutoring

If your camper is having their Bar/Bat Mitzvah during September- November after camp, we can coordinate tutoring sessions via zoom with their Bar/Bat Mitzvah Tutor. Please contact [Linz@pinemere.com](mailto:Linz@pinemere.com) ahead of time with the tutor's contact information and she will coordinate the schedule.

## Birthdays

Every child celebrating a birthday at camp will receive recognition and lots of attention from the entire camp. The birthday girl or boy will receive a cake of their flavor preference, which is shared by his/her bunk at lunch or dinner, and the whole camp will sing "Happy Birthday" to him/her. If you would like to send special decorations or small gifts for the birthday camper, please contact [Linz@pinemere.com](mailto:Linz@pinemere.com) in advance to make arrangements.

A call between a camper celebrating a birthday and his/her parent(s) will be provided (from camp to the family). Our office will contact you to arrange the birthday call, which usually takes place during the morning hours, or we can accommodate another time to fit the family's schedule.

## Bunk Placements

All camper placements are made by our Director of Camp Experience. We take several factors into consideration when making these decisions, including any special requests for bunk placement, bunk and social dynamics, and available space.

- PLEASE NOTE THAT WE BUNK BY GRADE! For example, if your camper is currently in 3rd grade; they will be in a Rising 4th grade bunk. Please ONLY submit your camper's **TOP 2 bunk requests**. We make every effort to honor bunk requests, but they are not guaranteed.
- **\*\*MUTUAL BUNK REQUESTS** are given top priority. Bunk assignments will be announced upon your arrival to camp. When you log into [CampInTouch](http://CampInTouch), you can find the Bunk Request Form under "Forms & Documents." If you have any questions about the bunking process, please reach out to [Linz@pinemere.com](mailto:Linz@pinemere.com) prior to April 1st.

*Continued on the next page...*

## **Cancellations**

**Refund Policy:** January 1st in order to receive a FULL refund. After January 1st, deposit is nonrefundable. After May 1st, nothing will be refunded.

## **Discretionary Account**

Your all-inclusive 2026 tuition covers all expenses for your child during the summer including all snacks from the canteen, sundry items, and a limited amount of camp gear. Please note that all campers will receive one white Pinemere T-shirt and water bottle upon arrival at camp. Additional camp gear (not required) can also be purchased on the first and last day of camp and on Visiting Day.

## **Dress Code**

We require each camper to dress in a way that reflects respect for the environment of the camp, and meets generally acceptable standards of cleanliness, neatness, and modesty. We suggest that families and campers discuss levels of appropriateness before arriving at camp, and to remember that Pinemere is a place where we play in the dirt, get wet, sweat, and play.

Please note that shirts or other clothing with inappropriate wording or graphics will not be permitted. This includes clothing that uses sexually explicit or profane language or promotes the use of alcohol, drugs, or smoking. With regard to bathing suits, shirts, skirts, shorts, etc., Pinemere Camp staff may ask a participant to change his/her clothing if deemed inappropriate.

## **Evaluations**

At the conclusion of the summer season, you will receive an evaluation to complete via email about your experience. We ask for you to provide feedback and insights into the summer in order to ensure another fabulous Pinemere experience for your family and others. Campers fill out surveys about their camp experience during the summer.

## **Food**

Our chefs prepare meals in a Kosher facility that is nutritious, plentiful, and offers variety. Many of our campers and staff have their own dietary needs, so we substitute acceptable items whenever needed. There are always alternative meals for those with allergies or legitimate restrictions. Salad bar, soy nut butter and jelly, fresh fruit, gluten-free, and vegetarian alternatives are available for campers at lunch and dinner each day. We plan meals that have an abundance of fresh items, including fruits and vegetables, as well as traditional camp favorites. The meals are served family style and our campers and staff eat with their bunks. [Wolfods](#) is our exceptional food service provider.



**If your child has any special dietary needs, please note them on the Health History form. We provide Lactaid pills at all Dairy meals.**

*Continued on the next page...*

### **Incident Response & Security**

The health and well-being of the campers and staff is our highest priority. Our professional and summer staff spend considerable time developing protocols to maintain the safety of our camp community and creating effective planning for responding to any type of crisis. For more information, please contact our Executive Director.

### **Laundry**

Laundry is done once each week by an outside professional laundry service. Laundry is picked up at camp and delivered back to camp by the next day. Each camper will need his/her own personal laundry bag for dirty clothes, but individual bags will be provided for the campers to send items to the laundry service. Please remember that all items should be clearly marked with the camper's full name. We suggest using permanent or laundry markers, sewn-on or ironed-on labels, or label stickers (Label Daddy is great!).

### **Lost & Found**

Pinemere Camp does not assume responsibility for the loss or damage of items brought to camp. We return lost and found items regularly throughout the camp season. **Please mark all of your camper's belongings with his/her first and last name.**

### **Money & Valuables**

Campers do not need any money with them at camp. All expenses are included in your child's tuition. Money and valuables brought to camp will be stored in our camp safe and returned to families at the end of the session. We cannot be responsible for any items/valuables brought to camp that are misplaced or damaged.

### **Mosquitoes & Insects**

<https://www.ivyoaksanalytics.com/>

Pinemere is a certified camp with Ivy Oaks Analytics. Ivy Oaks Analytics provides a service that controls ticks, mosquitoes, and poison ivy. It provides the best outdoor safety! We also are quite diligent in having our staff apply insect repellent to our campers on a regular basis.

### **Musical Instruments**

If your child plays an instrument, we encourage them to bring it to camp. Please consider that all instruments are kept in the camper's bunk, and we cannot be responsible for any damage to the item. If your child does not have an instrument, but would like to learn how to play the guitar, we have programs and staff members available for instruction – we'll even try to lend them a nice "six-string." "Camp Rock" will be offered as an individual elective and will also be offered to bunks who select to participate. "Camp Rock" will strive to instill a love of creating music in our campers and will seek to teach the next generation of Pinemere song leaders how to play guitar, drums, and lead sing-alongs.

### **Pets**

Please keep personal and family pets (including dogs and cats) away from all camp property. This includes bringing your child's new puppy or favorite kitty on arrival, departure, or visiting day – even if the pet is well-trained. Anyone who brings a pet onto the premises will be asked to remove the pet immediately.

### **Pictures**

"Official" photographs of each camper and bunk will be taken and added to **Waldo Photos** at the beginning of each session. We also post 500+ photos every day except Shabbat, so you can see your children in action around camp. From here, families can opt to purchase images if they wish.

*Continued on the next page...*

### **Reunion**

Pinemere Camp hosts an annual camper reunion during the off-season. All campers (and staff) in attendance the prior summer are encouraged to attend. Information will be sent out via email prior to the event.

### **Sports Equipment**

All of our campers are guaranteed high-quality sports experience at camp this summer. We supply modern equipment for use by all ages of campers. If your child wishes to bring his/her own equipment, please make sure your child's name is clearly labeled.

### **Swim Instruction**

Instructional swim periods are run to American Red Cross (ARC) standards. Campers are divided into groups at the first swim of their session and are given ongoing instruction to help them improve their skills, no matter what the level. These groups are guided by qualified lifeguards and receive assistance from other counselors when needed. Rising 1st-3rd graders have instruction every day. Rising 4th-9th graders do not have swim instruction. They are offered a "Swim instruction" elective that they can choose. All campers are expected to take a "Deep Water Swimming Test" at the start of the session. The Deep Water Test includes swimming 2 full laps of the pool and treading water for 60 seconds. If campers do not pass, they are able to retake the test as many times as they would like. Every camper has a Free Swim period in the afternoon.

### **Telephone Calls**

Campers are not allowed to make or receive telephone calls while at camp. Feel free to reach out to Linz or their Camper Care Specialist as often as you like – whatever you need to feel comfortable while your child is at camp. One standard exception to our telephone policy will be the permission of campers celebrating a birthday while at camp to have a call with a member of your family. This will be scheduled as described in the "Birthdays" section.

### **Tours of Camp**

If you have any friends who would be interested in taking a close-up look at Pinemere for future enrollment, please encourage them to email [Linz@pinemere.com](mailto:Linz@pinemere.com) to join us for a tour of camp.

### **Trips**

As part of our program at camp, we occasionally take our campers out of camp for special activities and trips. These excursions include such things as canoe trips, hiking, bowling, movie theaters, roller skating, and a local water or amusement park. For these programs, our staff maintains the same strict policies on supervision, and all activities are overseen by on-site administrators and other essential staff. Parents/guardians may not meet their campers while they are out of camp during the session.

### **Visitation Policy**

Pinemere has a strict no visitor policy. Any exception is granted exclusively by the Executive Director. If you are interested in arranging a tour, please email [Linz@Pinemere.com](mailto:Linz@Pinemere.com). In the event that a parent/guardian needs to visit camp or pick up his/her child for any reason, please contact Linz to make arrangements. Individuals who are picking up or dropping off staff members on their days off must stay in the office only. They are not permitted into camp.



# PINEMERE DAILY SCHEDULE

## SUNDAY, TUESDAY, THURSDAY

7:30 AM	Wake-Up
7:55 AM	Flag Raising
8:00 - 8:35 AM	Breakfast
8:40 - 9:20 AM	Bunk Clean-Up
9:30 - 10:15 AM	1st Period: Bunk Activity
10:30 - 11:15 AM	2nd Period: Bunk Activity
11:30 AM - 12:15 PM	3rd Period: Bunk Activity
12:30 - 1:10 PM	Lunch
1:15 - 2:00 PM	Rest
2:15 - 3:00 PM	4th Period: Elective
3:00 - 3:10 PM	Snack
3:15 - 4:00 PM	5th: R/L/E Elect., H/V Free Swim
4:15 - 5:00 PM	6th: R/L/E Free Swim, H/V Elect.
5:05 - 6:05 PM	Shower Time
6:10 PM	Flag Lowering
6:15 - 7:00 PM	Dinner
7:05 - 7:45 PM	Free Play
7:50 - 8:30 PM	Explorers: Evening Activity
7:50 - 8:50 PM	R/L: Evening Activity
7:50 - 9:10 PM	H/V: Evening Activity
8:35 - 9:20 PM	Explorers: Circle Time*
8:55 - 9:45 PM	R/L: Circle Time*
9:15 - 10:00 PM	H/V: Circle Time*

## MONDAY & WEDNESDAY LATE WAKE-UP

8:30 AM	Wake-Up
8:55 AM	Flag Raising
9:00 - 9:35 AM	Breakfast
9:40 - 10:20 AM	1st Period: Bunk Clean-Up
10:30 - 11:15 AM	2nd Period: Bunk Activity
11:30 AM - 12:15 PM	3rd Period: Bunk Activity
12:30 - 1:15 PM	Lunch

See daily schedule  
above for remainder  
of the day!

### KEY

H/V = Hilltop & Village

R/L/E = Row, Line & Explorers

\*After "Circle Time" it's **LIGHTS OUT!**



## FRIDAY

7:30 AM	Wake-Up
7:55 AM	Flag Raising
8:00 - 8:35 AM	Breakfast
8:40 - 9:20 AM	Bunk Clean-Up
9:30 - 10:15 AM	1st Period: Elective
10:30 - 11:15 AM	2nd Period: Elective
11:30 AM - 12:15 PM	3rd Period: Elective
12:20 - 1:10 PM	Lunch
1:15 - 2:00 PM	Free Play
2:15 - 3:00 PM	R/L/E: Free Swim
	H/V: Program
3:00 - 3:10 PM	Snack
3:15 - 4:00 PM	R/L/E: Program
	H/V: Free Swim
4:00 - 5:20 PM	Shower Time
5:25 PM	Flag Lowering
5:30 - 6:15 PM	Services
6:30 - 7:15 PM	Shabbat Dinner
7:30 - 8:45 PM	Tie Dye Friday
8:50 - 9:45 PM	R/L/E: Circle Time*
9:15 - 10:00 PM	H/V: Circle Time*



## SATURDAY

8:30 AM	Wake-Up
8:55 AM	Flag Raising
9:00 - 9:30 AM	Breakfast
9:45 - 10:35 AM	Shabbat Services
10:45 - 11:25 AM	Unit Activity
11:35 AM - 12:10 PM	Sing
12:20 - 12:30 PM	Family Time
12:30 - 1:10 PM	Lunch
1:15 - 2:00 PM	Rest
2:15 - 3:00 PM	4th Period: Elective
3:00 - 3:10 PM	Snack
3:15 - 4:00 PM	5th Period: Elective
4:15 - 5:00 PM	6th Period: Elective
5:05 - 5:55 PM	R/L/E: Shower Time
5:05 - 6:25 PM	H/V: Shower Time
6:00 - 6:30 PM	R/L/E: Cookout Dinner
6:30 - 7:15 PM	H/V: Cookout Dinner
	R/L/E: Free Play
7:20 PM	Flag Lowering
7:30 - 7:45 PM	Havdalah
7:55 - 8:30 PM	Explorers: Evening Activity
7:55 - 8:50 PM	R/L: Evening Activity
7:55 - 9:10 PM	H/V: Evening Activity
8:35 - 9:20 PM	Explorers: Circle Time*
8:55 - 9:45 PM	R/L: Circle Time*
9:15 - 10:00 PM	H/V: Circle Time*





# PINEMERE CAMP PACKING GUIDE



## GENERAL CLOTHING

- 14 T-Shirts/Tank Tops
- 4 Shirts for Maccabi (1 Green, 1 Blue, 1 Red, 1 Tie Dye)
- 1 White shirt for tie-dying (feel free to bring your own tie dye shirts)
- 1 Sports Jersey (optional alternative to tie dye)
- 1 Hawaiian Shirt/Sun Dress (optional for rising 7-9<sup>th</sup> grader dances)
- 2 Sweatshirts/Long Sleeve Shirt
- 2 Sweatpants
- 10 Shorts
- 2 Pants/Jean
- 4 Bathing Suits
- 14 Underwear
- 5 Bras
- 14 Pairs of Socks
- 4 Sleepwear/PJs



## SHABBAT CLOTHING

- 3 White Shirts (may have logos)
- 1 White Long-Sleeve Shirt
- 2 Khaki/White Shorts or Skirts/Dresses
- 1 Khaki/White Pair of Pants

## OUTERWEAR & FOOTWEAR

- 1 Rain Coat or Rain Poncho
- 1 Baseball Hat (or as many as you like)
- 1 Sneakers (for everyday use)
- 1 Athletic Sneakers (optional)
- 1 Rain Boots/Waterproof shoes
- 1 Sandal/Flip-Flops (for beach or pool)
- 1 Flip Flops (for the Shower)



## MISCELLANEOUS

- LABELLED Water Bottles (2)
- SUNSCREEN (A LOT!)
- Bug Spray
- Laundry Bag
- Hand-held Fan: battery operated
- Flashlight: don't forget the Batteries!
- Stationery: helpful to keep in clipboard
- Envelopes/Stamps: pre-addressed is best
- Pens & Pencils
- Camera
- Sunglasses



## LINENS & BEDDING

- 1 Pillow
- 2 Pillow Cases
- 2 Fitted Sheets (cot or twin size)
- 2 Top Sheets
- 1 Blanket
- 1 Comforter
- 1 Sleeping Bag (rising 4-9<sup>th</sup> graders)
- 3 Bath Towels
- 3 Pool/Beach Towels

## TOILETRIES

- Toiletries Bin to keep everything in!
- Toothbrush & Case
- Toothpaste & Floss
- Soap (case if necessary)
- Deodorant
- Feminine Female Products
- Tissues
- Shampoo/Conditioner
- Hair Brush & Hair Ties



## OPTIONAL ITEMS TO PACK!

**Any Sport Gear:**  
Baseball Glove, Tennis Racket, Lacrosse/Hockey Stick, Fishing Rod (all are provided at camp)!

**Any Musical Instrument:**  
Harmonica, Guitar, Violin, Ukulele, Trumpet, etc.



**Activities:**  
BOOKS, Cards, Games, MP3 Player, Stickers, Coloring Supplies

**Additional Storage:**  
Under-the-bed Plastic Box (7"H x 39" W x 20" D), Fabric Cube, 11" Storage Bins, Small Backpack

**Others:**  
Costumes, Hair Dryer, Handheld Mirror, Watch/Clock, Egg Crate, Crazy Creek Chair

## ONE MORE THING!

Campers like to decorate their bed area so it feels like their own personal "home." Feel free to bring pictures to hang on the walls, stuffed animals, a small bath mat, and anything that will make their area feel special!

## PLEASE DO NOT PACK:

- Anything Electronic, including Cell Phones (We are 100% SCREEN-FREE)!
- Inappropriate Clothing or Inappropriate Music
- Food or Beverages
- Knives/Weapons
- Money or Valuables

## HELPFUL TIPS & REMINDERS!

### LABEL EVERYTHING!

And we mean Everything!  
A sharpie can get the job done (other labels are good, too). Laundry gets sent out weekly and is returned a couple of days later.

### WHAT TO PACK IN:

We recommend Duffel Bags that are 42"h x 20"w x 20"d. Campers will keep their bags at camp to pack themselves home in.

### DON'T SEND EXPENSIVE OR IRREPLACEABLE STUFF!

Pinemere is not responsible for lost or damaged items.

### DON'T OVER-PACK!

Space is limited at camp! Campers receive one cubby for clothes and another for towels/linens.

### DON'T SPEND A LOT OF \$\$\$

We pride ourselves on our Rustic camp setting. If your camper forgets anything, we will make sure they receive it while at camp.

\*See next page for SPARK camper PACKING LIST!



# PINEMERE CAMP



## SPARK PACKING LIST

### GENERAL CLOTHING

- 5 T-Shirts
- 1 Sweatshirt
- 3 Shorts
- 1 Pant/Jeans
- 2 Bathing Suits
- 4 Underwear
- 4 Pairs of Socks
- 1 Sleepwear/Pajamas



### SHABBAT CLOTHING

- 2 White Shirts (may have logos)
- 1 White Long-Sleeve Shirt/Sweatshirt
- 1 Tie Dye T-Shirt
- 2 Khaki/White Shorts/Pants or Skirts/Dresses

### OUTERWEAR

- 1 Rain Coat or Rain Poncho
- 1 Baseball or Brimmed Hat

### FOOTWEAR

- 1 Pair Sneakers (all-purpose)
- 1 Rain Boots/Waterproof shoes
- 1 Flip-Flops (for the Shower)



### MISCELLANEOUS

- LABELLED Water Bottle
- Laundry Bag
- Bug Spray
- SUNSCREEN
- Stuffed Animal
- Flashlight (don't forget the Batteries!)
- Book or Magazine
- Camera (if desired)
- Sunglasses



### LINENS & BEDDING

- 1 Pillow
- 1 Pillow Case
- 1 Fitted Sheets (cot or twin size)  
Provide an extra for a bed-wetter
- 1 Top Sheets (cot or twin size)  
Provide an extra for a bed-wetter
- 1 Blanket
- 3 Towels (for Bath/Lake/Pool)

### TOILETRIES

- Toiletries Bin to keep everything in!
- Toothbrush & Case
- Toothpaste
- Soap (case if necessary)
- Shampoo/Conditioner
- Hair Brush/Comb & Hair Ties



### HELPFUL TIPS & REMINDERS!

Please consider this information when preparing your child for camp. We recommend that you make a copy of the list of what is actually sent to camp, and enclose another copy in your child's baggage.

#### LABEL EVERYTHING!

Please remember to label everything (first & last name)! A permanent laundry marker or label can get the job done!

#### WHAT TO PACK IN:

We recommend Duffel Bags that are 42" h x 20" w x 20" d. Campers will keep their bags at camp to pack themselves home in.

#### DON'T SEND EXPENSIVE OR IRREPLACEABLE STUFF!

Pinemere is not responsible for lost or damaged items.

#### DON'T SPEND A LOT OF \$\$\$

We pride ourselves on our Rustic camp setting. If your camper forgets anything, we will make sure they receive it while at camp.



### OPTIONAL ITEMS TO PACK!

- Books, Cards, Games, MP3 Player, Stickers, Coloring Supplies, Small Backpack, Crazy Creek Chair

#### DON'T OVER-PACK!

Space is limited at camp! Campers receive one cubby for clothes and another for towels/linens.

#### Please Do NOT Pack:

- Anything Electronic, including
- Cell Phones (We are 100% SCREEN-FREE!)
- Inappropriate Clothing or Inappropriate Music
- Food or Beverages
- Knives/Weapons
- Money or Valuables



\*This PACKING LIST is only for SPARK campers!



# PINEMERE CAMP PACKING POINTERS

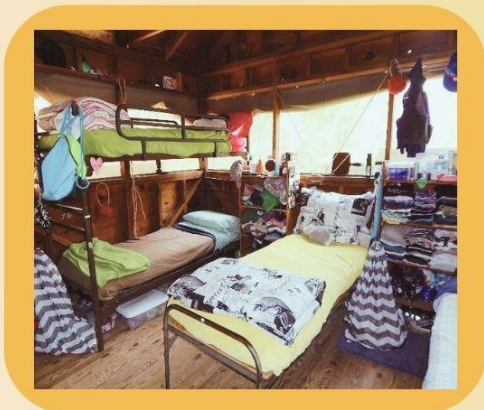


You've signed up your Camper up for CAMP! They're excited... you're excited!  
Then you realize, you have to get them PACKED for camp!  
Where do you begin? Have no fear... you start right here!

## WHAT TO PACK IN

Before you can begin the packing process, you must first have something to pack your stuff in!  
The days of heavy trunks are over! We suggest a large duffel bag.

- Usually **two large duffels** will fit everything you need.
- One duffel can be used for all clothing.
- The 2nd duffel can be used for towels & bedding.
- Recommended Duffel Bag size: **42" H x 20" W x 20" D**.
- **LABEL** your Duffel bags!  
(And of course, everything that you put inside of them!)
- These will be stored at camp after they are unpacked & then used for packing to go home.



## HOW MUCH TO PACK

Even though your camper may be going to camp for anywhere between 12 days to 7 weeks, laundry gets sent out weekly and is returned a couple of days later, so you do not need to over pack!

- Every camper receives a **cubby** next to their bed with 4 shelves.
- Typically, campers share the **shelves** in the Foyer for their towels & bedding.
- We recommend sticking as close to our **suggested Packing List** numbers as possible, in order to make sure you have enough room for everything.

## ADDITIONAL STORAGE

These items are completely optional, but have gotten very popular with our campers. Most items can be purchased at Target or on Amazon!

- **Under-the-Bed plastic box:** This can hold shoes, extra clothing, stationary supplies, books, flashlight... Typical size: 40 x 20 x 6 inches.
- **11" Fabric Cube Storage Bins:** These are great for putting in your cubbies to organize your clothing. Great for holding underwear, bathing suits, socks, etc.
- **Toiletry Bucket:** Kept in the bathroom to hold your shampoo, conditioner, soap, etc.
- **Sterilite Clearview Storage 3-drawer Organizer:** Fits right onto your cubby! Great place to keep stationary, books, magazines, etc.



# MORE PACKING POINTERS

## TIPS FOR CAMPER'S ATTIRE

You already have the official Packing List, but here's some extra info about clothing to pack!



- Bring **only casual, campy clothing!** Campers will be playing from the moment they wake up until they go to sleep, so we just want them to be comfortable & not worry about getting dirty or losing an item. (Again: **Label EVERYTHING** to minimize lost items.)
- Each session, the camp is split into **Blue, Green, Red & Tie-Dye for MACCABI**. (Maccabi is a fun, all-camp experience that lasts for 1-2 days, where everyone gets to join in on sports, dance, song, arts, and, of course, cheering!) So, it's always fun to bring gear to represent the team you're on. At least a T-shirt is recommended, and some camper's even bring tutus, wigs, crazy socks, etc.
- Every Friday night, the whole camp participates in **TIE-DYE Friday!** (This is our Shabbat Program that consists of singing & dancing to Israeli music.) We have campers tie-dye the first week of camp, but bringing other tie-dye from home is very much encouraged! Anything colorful, neon, and sparkly will also do the trick! And some Village kids (rising 7-9 grade boys unit) wear basketball jerseys on Friday nights!
- When it rains... it pours! Literally! Make sure you pack a **waterproof rain coat & rain boots!** No matter the color or style, these boots are sure to make an appearance on those wet & cozy rainy days. Please, **NO umbrellas!**
- Inexpensive **flip flops** are perfect for shower shoes! (Plan on throwing them out at the end of the summer!)

## CAMPER'S STUFF: OTHER SUGGESTIONS

- Any **battery-operated flashlight** will do! One of the recently popular ones has been the **snake flashlight**. Your camper won't need to hold it while they're reading a book, playing cards, or writing a letter at nighttime.
- Nothing is better on a hot day than a **battery-operated hand-held fan!** The ones that squirt water are great, too! Campers enjoy this in and out of their bunks!
- **Clipboards** are very helpful when it comes to writing letters. It's also a great place to store their stationary & stamps. Campers write home 5 days a week. We strongly recommend **pre-addressing** their envelopes! Even having **return address labels** with camp's address is helpful as well!
- Some campers bring an **Egg Crate Foam Mattress Pad** to place on their cot size mattress!
- Feel free to pack an **inexpensive camera:** disposable or film cameras are best. Polaroids are also popular with our campers!



# Advice for First Time Families

## **Advice for Families with Campers Going to Camp for the First Time**

According to Bob Ditter, psychologist and camping expert, the more a child has a chance to “practice” behaviors that are similar, the more the child will experience mastery. Going away to overnight camp for most children will be most successful if families try the following:

### **Speak to the parent/guardian of a child who has already attended Pinemere**

Families have their own language when it comes to children, and a family who’s been there can offer insights into camp. If you would like to contact families before the summer, please call the camp office and we can provide references for you.

### **Begin having overnights**

If your child has never had a sleepover, start with either a best friend in the neighborhood or with a favorite relative (grandparents, cousins, etc.)

### **Showers**

If your child typically takes baths at home, have them begin “practicing” taking showers, and turning the shower on & off on his/her own.

### **Getting ready**

Have your child participate both in shopping for camp and some of the packing. Practice folding clothes and making a bed from “scratch.”

### **Problem solve with your child before camp**

“What should you do if you run out of underwear?” “What will you do if you are not feeling well?” Families might want to try role-playing some possible camp problems with their child.

### **Speak openly about your child being away**

Check your own feelings about having your child away for three, four or seven weeks. Children are keen sensors of parental angst. If you are not ready yourself, it may be harder for your child to leave and feel permission to have fun.

### **Develop a good relationship with the directors**

If you or your child is homesick, an understanding director can help you through the rough spots.

### **Remember why you are sending your child to camp in the first place:**

To have fun, make great friends, learn more about him/herself, and grow a little more self-confident and self-reliant.

### **Attend a New Family Orientation**

Whether it’s in-person or virtual, attending one of Pinemere’s New Family Orientations will make you feel more prepared for camp! It helps ease your concerns and gets your campers excited for their fun summer ahead!

# Camper Care Tips

## Help with Homesickness

It is important to remember that going to camp can be a major change for any child and that a camper can be homesick at day camp just as easily as at resident camp. The most important thing is for families to feel good about camp themselves, and about the idea of their child being there.

- ★ When packing for camp, ask your child what special (non-valuable) personal items they might want to take along. This is to increase comfort levels by having something familiar nearby as they adjust to a new place.
- ★ Talk about going to camp in the days leading up to it. About one week beforehand, start talking about what they are looking forward to, what they want to do most at camp when they get there, etc.
- ★ Speak openly about homesickness. Mention that kids often feel jittery about going to a new place and inquire about how they are feeling. Feeling nervous is normal. Reassure your child that you believe in them and their ability to make friends and have fun.
- ★ Second-year campers (and other “veterans”) can also experience homesickness. This sometimes comes from pressure that last summer was “the greatest time of their life.” Remind your child that he/she will once again have fun and will have new experiences and will make new friends to add to their awesome experience.
- ★ Have a letter ready to mail a day or two before camp begins so it is there the day your child arrives. Avoid long descriptions of all the things he/she might be missing, as this may make him/her feel torn about missing out.
- ★ If your child is a bed-wetter, has any medical restrictions, or needs extra attention, it is imperative that this information is shared with our staff before the summer. If your child is a bed-wetter, please be sure to send extra sets of sheets and disclose your “tapping” methods to the director who in turn will share the appropriate information with your child’s counselor. We appreciate this information, and it will allow us to better serve your child’s needs.

## What to Say (and What NOT to Say)

Here are examples of **GREAT** things to say to your children as they prepare to leave for camp:

- “Pinemere (or Aaron or Linz) knows how to get in touch with me if they need to.”
- “I’m going to be checking out the website every day to see how you’re doing.”
- “I’m going to write to you all of the time.”
- “I love you, and I’m really happy that you’ll be having this awesome experience this summer.”

Here are some **NOT GREAT** things to say to your children as they prepare to leave for camp:

- “I’ll pick you up early if you get too homesick.”
- “Just try camp for a week and see how you like it.”
- “You have to go to camp so that we can get a vacation.”
- “You can call me anytime.”



# Contract of Understanding

**Pinemere Camp is dedicated to offering children, teens, and staff a chance to enjoy a summer camp experience in a majority Jewish setting where they can grow socially, emotionally, and spiritually.**

We strive to create a community that is safe for individuals to take risks by providing them with the tools necessary to find success in doing so. It is our goal to provide a well-supervised and nurturing environment for our campers and teens and only employ exciting staff members who understand their roles as strong role models, educators, and supervisors. Pinemere Camp is a place where participants will create, learn, and live together while making memories that will last a lifetime. This unique opportunity is exciting, yet challenging. Living together requires a lot of cooperation, sharing, patience, and respect. In addition, we have high expectations and standards of behavior at Pinemere. We do not tolerate abuse or exclusive behaviors of any kind, be it mental, physical, sexual or verbal.

One of our goals at Pinemere is to help individuals learn to be responsible for their own behavior. In most situations, we will solve behavioral problems without having to involve families. This is different if a person exceeds the limits understood by the camp community. We expect:

- **Respect for all campers & staff**, which means that no person will ever hurt another person physically, sexually, or psychologically. We will treat all animals with respect, too.
- **Respect for the environment and facilities**, which includes the natural environment in which we live during the summer, activity and program spaces, as well as one's own personal space.
- **Alcohol and drugs may not be possessed or used at camp** and the consequence for possession or use will be dismissal from camp. No camper or teen may possess any smoke-able substance, matches, or lighters.
- **Camp is not a place to experiment sexually**. Any behavior beyond discreet hugging and kissing is not permitted.
- **Weapons of any kind are not permitted.**
- **Campers adhere to our screen free policy.**
- **Individuals will make choices which are good for themselves and for others, and take responsibility for those choices.**

With these standards and expectations in place, the administration of Pinemere reserves the right to immediately remove any person(s) at risk to themselves or the community. We will expend every effort on behalf of the entire camp community to make the camp experience a positive one. We hope to form a partnership with families to deal with concerns in an honest, productive, and effective manner. Please remember that Pinemere is a family, and we respect and value our relationships.

Our Jewish values guide our everyday actions and decisions. At Pinemere, we pledge to care for your children and help guide them on the right path towards positive experiences, building relationships, and making good choices. Together, we can help ensure that your children have a meaningful, fulfilling, and fun summer.

# IMPORTANT INFORMATION

## 1. ELIGIBILITY

To enroll at Pinemere Camp, children must be entering at least 1st grade for the 2026-2027 school year. Children entering 12th grade may not be eligible to attend as campers (please contact our office for more information). It is assumed that all campers are in good physical and mental health and that they accept the camp's rules of behavior as outlined below.

## 2. RULES OF BEHAVIOR & DISMISSAL

All campers are expected to respect all members of the Pinemere community, all living things, camp property, the environment, and are expected to follow all camp rules. There is a strict no-tolerance policy for the possession or use of illegal drugs, alcohol, tobacco products, or weapons of any kind on camp property or while under camp supervision. We maintain these rules to ensure a safe and enjoyable camp experience for everyone. **Pinemere Camp reserves the right to dismiss any camper without refund for violations of the camp's rules or actions deemed inappropriate by the Director.**

## 3. VANDALISM

Pinemere reserves the right to charge families for vandalism by their camper (writing names on walls, carving into picnic tables, etc.) at a charge of \$500 per occurrence.

## 4. BUNK PLACEMENTS & REQUESTS

Bunk requests will be considered but are not guaranteed. Please refer to camp policies for how to submit requests.

## 5. COMMUNICATIONS & MAILINGS

Campers will regularly write home. Parents can communicate with campers through Campminder Stamps. Campers are not allowed to use the phone without the Director's permission, but parents are encouraged to contact our office. **We have a no-package policy at Pinemere. Unauthorized packages will be returned to the sender.** However, flat envelopes such as magazines are allowed. Please do not send food items, including gum. Pinemere reserves the right to open and review any mail sent to campers.

*Continued on the next page...*

## **6. TIPS & GRATUITIES**

Tips or gratuities for camp staff are not permitted. However, families may choose to make contributions to Pinemere Camp's scholarship fund in the name of a staff member to acknowledge their hard work.

## **7. INSURANCE**

All campers must have suitable medical insurance to attend camp. This insurance will be used in the event of doctor or hospital visits during the camp season. A Prescription Plan must also be provided before camp begins, including a copy of both sides of the insurance card.

## **8. MEDICAL FORMS & MEDICATIONS**

Campers must submit completed medical forms, which include information from their physician. Medications are not allowed in the bunks and will be kept in the Health Center for distribution by the camp's medical staff. Campers who require daily medication must participate in our medication packaging program.

## **9. PERSONAL ITEMS**

Pinemere Camp is not responsible for the loss or damage of personal items, including those sent to laundry. Please label all clothing and camp supplies clearly to help prevent loss.

## **10. CANCELLATIONS**

Once a child is enrolled, Pinemere begins planning for the season. Cancellations must be made in writing with as much notice as possible. **Refund Policy:** January 1st in order to receive a FULL refund. After January 1st, deposit is nonrefundable. After May 1st, nothing will be refunded.

## **12. PROMOTIONAL MATERIALS**

Pinemere Camp reserves the right to use camper images in promotional and program materials.

## **12. BINDING ARBITRATION AND VENUE**

Any disputes related to these policies or your child's attendance at Pinemere Camp will be resolved through binding arbitration in Philadelphia, Pennsylvania, under the rules of the American Arbitration Association.

# Social Networking & Internet Policy

The internet and social networking websites and apps allow campers to communicate with the public. It has also become a place where "cyber-bullying" can exist--children threatening and intimidating other children. Inappropriate internet behavior is dangerous and directly contradicts camp's moral standards and mission. The guidelines below help assure that all campers, staff, and parents remain safe and secure.

**I agree to be respectful of the camp, its program, the campers, and its employees in all communications in my profile, blog, or other internet communications. I will not:**

- Use obscenities, profanity, or vulgar language
- Engage in harassment, cyber-bullying, or intimidation
- Post comments that are derogatory with regard to an individual person's race, gender, religion, sexual orientation, or disability
- Engage in sexually explicit, suggestive, humiliating, or demeaning comments

**Communication initiated by campers to staff is permissible. Pinemere Camp's policy states that staff must ask families for permission to have camper "friends" and they must be kept on a limited profile setting, thereby blocking campers from staff members' personal content.**

We ask that parents discuss the seriousness of inappropriate communications with their children. As an important first step, if a child has the option to make his or her profile private to strangers, that should be done immediately. We also suggest that families monitor campers' cell phones, specifically text messages and other messaging applications.

The Internet is a wonderful tool with thousands of educational, entertaining, and informational websites that can open up a new and exciting world. We encourage this exploration tempered with some reasonable precautions.

# Local Sites

## Where to stay!

### *Hotels, Motels, Resorts*

**Hampton Inn & Suites**  
Bartonsville – 5 minutes  
570-369-1400

**Fairfield Inn & Suites**  
Bartonsville – 5 minutes  
570-421-0100

**Holiday Inn Express**  
Stroudsburg – 10 minutes  
570-872-9040

**Great Wolf Lodge**  
Tannersville – 15 minutes  
570-688-9899

**Stroudsmoor Country Inn**  
Stroudsburg – 15 Minutes  
570-421-6431

**Mount Airy Casino & Resort**  
Mount Pocono – 20 minutes  
877-682-4791

## Where to eat!

### *Quick Bites*

**Panera Bread**  
Café/Bakery  
Stroudsburg – 10 minutes  
570-476-6740

**Five Guys Burgers**  
Stroudsburg – 10 minutes  
570-421-9803

**Gabel's Ice Cream**  
Tannersville – 10 Minutes  
570-629-0370

### *Family Restaurants*

**Red Robin, Chili's & Longhorn  
Steakhouse**  
Bartonsville Crossroads Mall  
Stroudsburg – 10 minutes

**Trackside Grill and Bar**  
Stroudsburg – 10 minutes  
570-424-3200

**Sarah Street Grill**  
*Good Pub Food*  
Stroudsburg – 15 minutes  
570-424-9120

**Ichiban Steak House**  
Stroudsburg – 10 minutes  
579-420-9009

**Snydersville Diner**  
*A Pinemere Institution!*  
Snydersville – 15 Minutes 570-  
992-4003

### *Fine Dining*

**Smugglers Cove**  
*Seafood & Steak House*  
Tannersville – 10 minutes  
570-620-2277

**Thai Tani**  
*Authentic Thai Cuisine*  
Stroudsburg – 15 minutes  
570-421-8118

**Rare and Rye Steakhouse**  
Stroudsburg – 10 minutes  
570-664-7136

## Where to go!

**Camelback Ski Area**  
CamelBeach Water Park  
Ski Mountain & Water Park  
Tannersville – 15 Minutes  
570-629-1661

**Crossings Outlet Mall**  
Shopping Outlets  
Tannersville – 10 Minutes  
570-629-4650

**Stroud Mall**  
Shopping, Movies, Food Court  
Stroudsburg – 15 Minutes

**Bushkill Falls**  
"The Niagara of Pennsylvania"  
Route 209, Bushkill  
570-588-6682



# Pinemere Lingo



After we finished the *Birkat*, I went out onto the Green, and then walked to my bunk on the Line.

The following terms are used at Pinemere – some more than others. If you know what every term means, you’ve obviously been around for a while! Do not expect to remember everything right away – it takes us all a bit of time to pick up the language.

<b>611</b>	The major road located a few miles from camp leading into Stroudsburg, PA.
<b>Aaron</b>	Interim Executive Director
<b>ACA</b>	American Camp Association. We're accredited by this national organization.
<b>Announcements</b>	At the close of each meal, important information will be shared with campers and staff.
<b>Aqua-Glide</b>	One of our beloved Lake toys.
<b>Area Leader (AL)</b>	The Staff person who supervises each Area and Specialty counselors.
<b><i>Birkat Hamazon</i></b>	The prayer that is recited after meals.
<b>Board of Directors</b>	As a non-profit organization, Pinemere has a volunteer Board that oversees the camp.
<b>Canteen</b>	Twice a week campers choose a candy & a chip and it's delivered to their bunk during REST period.
<b>Cheers</b>	After lunch & dinner, each bunk and/or unit shows their pride with camp cheers.
<b>CIT</b>	Counselors-In-Training. These boys and girls are entering 11 <sup>th</sup> grade.
<b>CIT Hunt</b>	<i>Not</i> when we try to find the CITs! A special camp event that is organized by the CITs.
<b>Cookout</b>	An outdoor activity where campers and their counselors build a fire & make "mushburgers."
<b>Cottage</b>	The building in the Line Unit which houses Bunks 5, 6, 7 & 8.
<b>Cubbies</b>	The wooden storage shelves camp provides in bunks for clothing and other items.
<b>Dell</b>	Where outdoor performances are watched, including our favorite- All Camp Lip-Sync.
<b>Dining Hall</b>	Where the entire camp enjoys Breakfast, Lunch, and Dinner together.
<b>Electives</b>	Specialty hobby periods for campers to choose and enjoy in the afternoons.
<b>Explorers</b>	Pinemere's youngest camper unit in camp. It's co-ed with Rising 1st-3rd graders.
<b>Field House</b>	Dedicated to Robert H. (Bob) Miner in 2000, this gymnasium is used for athletics and other camp programs.
<b>Flagpole</b>	Where the whole camp gathers to raise the flag before breakfast and lowers the flag before dinner.
<b>Flaps</b>	The heavy canvas covers that are raised and lowered daily over the screens of the bunks.
<b>Frankie and Johnny</b>	You'll figure this out when you go to our Saturday Folk Sing.
<b>Free Play</b>	The period after dinner where the whole camp can relax or go to open activity areas.
<b>Fun-Yak</b>	Small kayaks that campers can use during activities at the Lake.
<b>Gazebo</b>	A relaxing wooden outdoor seating spot.
<b>Green</b>	The grassy area in the center of camp where campers and staff go to relax and socialize.
<b><i>Hatikva</i></b>	Israel's national anthem.
<b><i>Havdalah</i></b>	The brief service that closes Shabbat, led by the CITs.
<b>Hilltop</b>	The unit for female campers entering 7 <sup>th</sup> – 9 <sup>th</sup> grade and their counselors.
<b>HQ2</b>	The small building on the Fields that houses athletic equipment.
<b>Jeremy</b>	Director of Finance and Operations.
<b>Job Wheel</b>	A tool used in each bunk to rotate campers and counselors through bunk cleaning chores.
<b>JCC/JCCA</b>	Pinemere is an independent camp that is affiliated with the Jewish Community Centers Association of North America (JCCA). While Pinemere is not directly overseen or connected to a JCC locally, we work with a number of JCCs in the region.
<b>Junior Counselor</b>	Our staff members who are going into their Senior year of high school.

*Continued on the next page...*

<b>Kashrut, Kosher</b>	Jewish dietary practices. Only land animals that chew their cud and have split hooves (sheep, cows; not pigs, camels) are permitted. All of these must be slaughtered in a special way. Further, meat products may not be eaten with any dairy products. Of sea creatures, only those (fish) having fins and scales are permitted. Fowl is considered a meat food and also has to be slaughtered in a special manner. Pinemere's kitchen is a Kosher facility.
<b>Lazy Day</b>	A great day of fun for the campers – a long day of work for staff.
<b>Line</b>	The unit for male campers entering 4 <sup>th</sup> -6 <sup>th</sup> grade and their counselors.
<b>Linz</b>	Director of Camp Experience.
<b>Maccabi</b>	"Color War" at Pinemere. Maccabi takes place each session and often involves an elaborate "breakout."
<b>Motzi</b>	The short prayer said before eating bread, recited before our meals.
<b>Mushburger</b>	A longstanding Pinemere tradition, this is the food made at cookouts and overnights.
<b>OD (On Duty)</b>	Multiple counselors from each Unit are assigned as rotating nighttime supervisors of campers.
<b>On Call</b>	A Professional Staff member (Director, etc.) is assigned nightly to be available and rotating throughout camp.
<b>Overnight</b>	An activity where campers and their counselors cross the road to one of our overnight sites, make a fire, make their own dinner, sleep out under a shelter, and return to camp in the morning.
<b>Paddleboard</b>	One of the toys that campers and staff can use during activities at the Lake.
<b>Pagoda</b>	The small structure at the Flagpole in which people can sit, relax and socialize.
<b>Pinemere Camp</b>	A co-ed Jewish overnight camp in the Pocono Mountains of Pennsylvania established in 1942.
<b>Pioneers A &amp; B</b>	The 14-day camp experience for campers entering grades 1st -3rd.
<b>Pioneers C</b>	The 13-day camp experience for campers entering grades 1st -9th.
<b>Polar Bear Club</b>	A secret!
<b>Rest Period</b>	A one-hour session after Lunch when campers relax in their bunks, write & receive letters.
<b>Row</b>	The Unit for female campers entering 4th – 6th grade and their counselors.
<b>Ruach</b>	Hebrew for "spirit!"
<b>Scrappy's Campsite</b>	One of our overnight campsites, previously referred to as "13/14"
<b>Shabbat</b>	The Jewish holy day of rest.
<b>Sing</b>	Every Saturday morning, the whole camp gathers in the Dell & sings with Pinemere's minstrels.
<b>SPARK</b>	The 3-night camp experience for campers entering grades 1st -3rd.
<b>Specialty</b>	An activity area where staff are used to offer qualified instruction and supervision.
<b>Supervisors</b>	Includes Program Area Leaders, Unit Leaders, and other supervisory positions.
<b>Super OD (On Duty)</b>	Camp Supervisors are assigned as rotating nighttime supervisors of all of camp.
<b>Turkey Roast</b>	The oldest girls' & boys' units spend a day cooking turkeys at a fire pit in their units.
<b>Unit</b>	A group of bunks, their campers, and staff. Camp has five camper units, a Rising 10th Grade Trip and a CIT Unit.
<b>Unit Leader (UL)</b>	The Staff person who supervises each camper Unit.
<b>Village</b>	The Unit for male campers entering 7 <sup>th</sup> – 9 <sup>th</sup> grade and their counselors.

